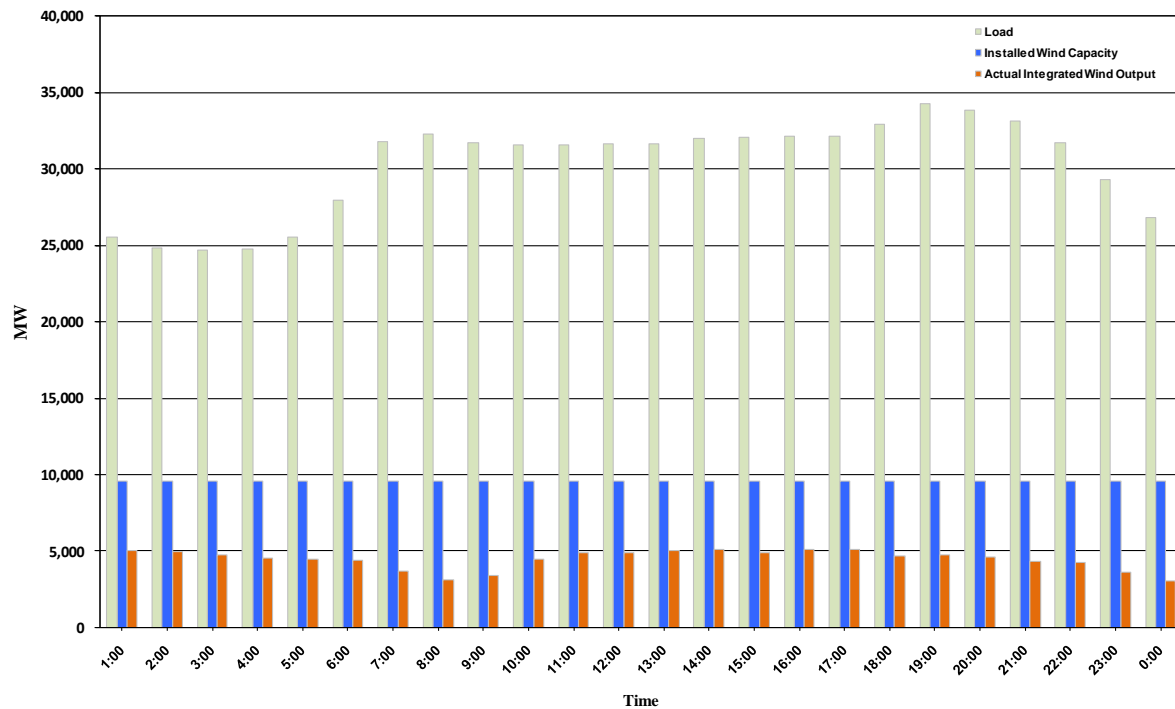




ERCOT Grid Operations Wind Integration Report: 11/17/10

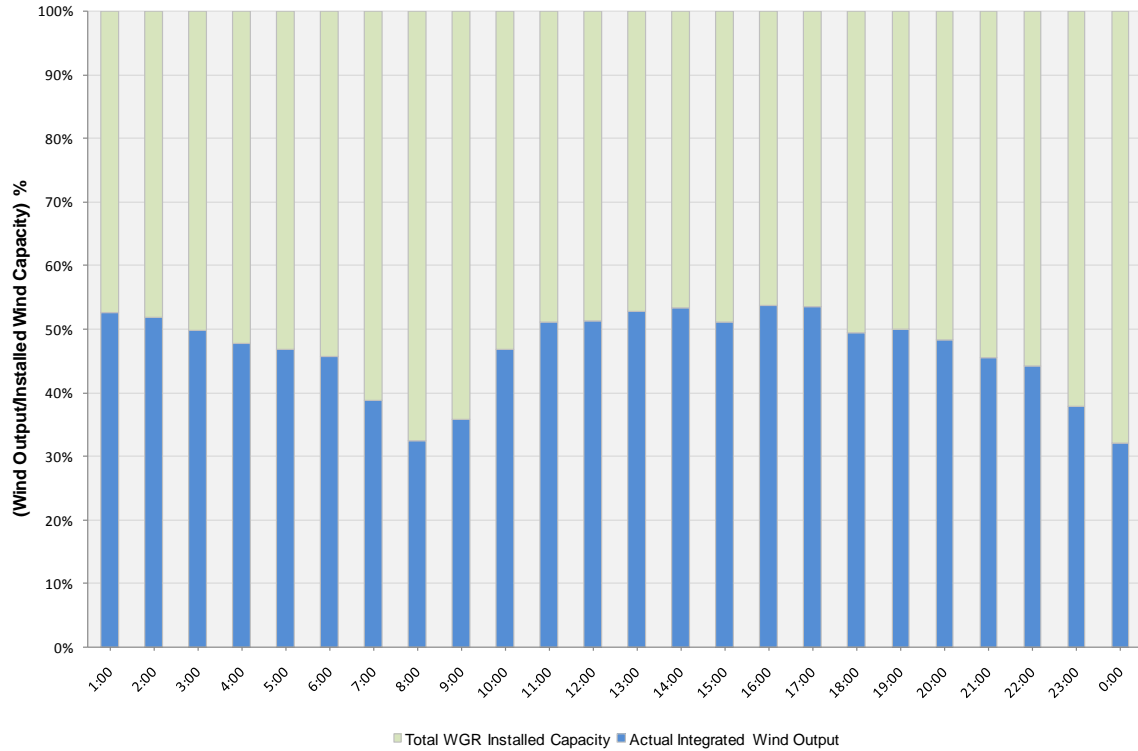
Peak Load	34,257 MW
Load Peak Hour	19
Wind Record 06/12/10	7016 MW
Max Wind value	5313 MW
Wind Peak Hour	13:07:16
Wind Integration %	16.65

Hourly Average Actual Load vs. Actual Wind Output
11-17-2010

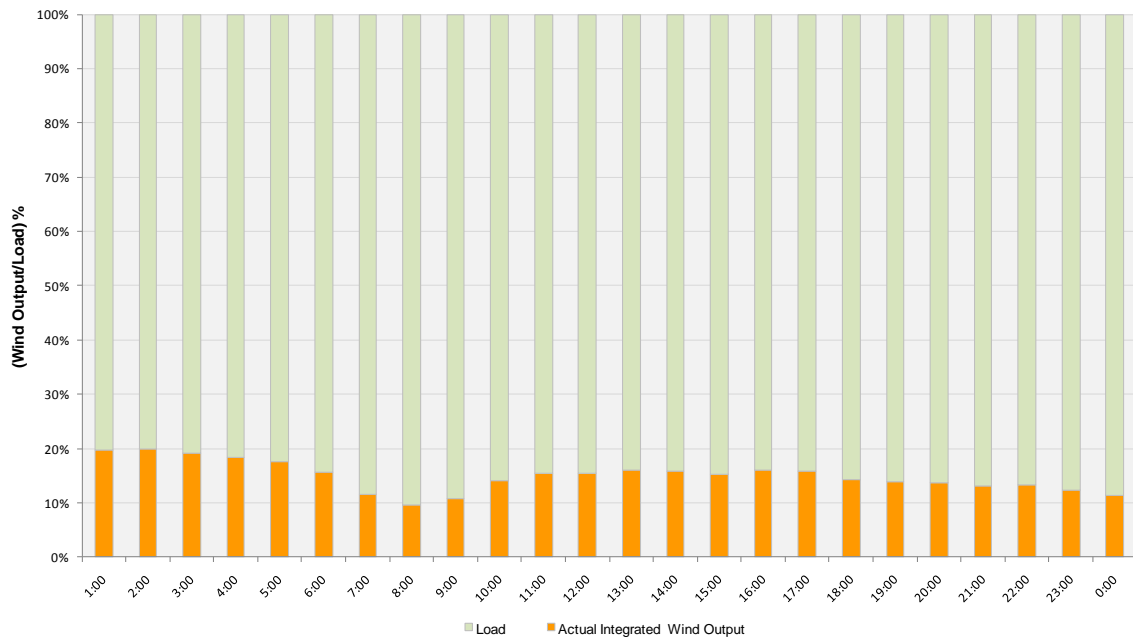




Actual Wind Output as a Percentage of the Total Installed Wind Capacity
11-17-2010



Actual Wind Output as a Percentage of the ERCOT Load
11-17-2010





ERCOT Load vs. Actual Wind Output 11/10/10 - 11/17/10

